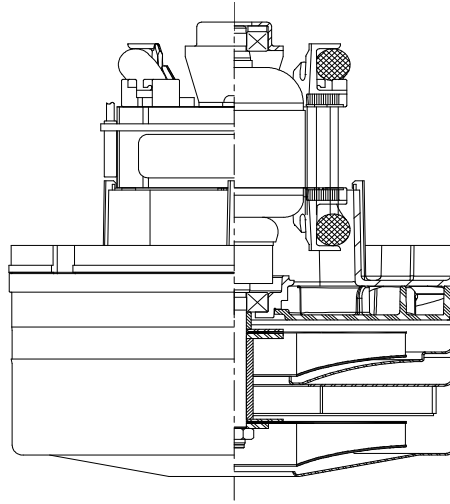


**AMETEK****Lamb Electric****Product Bulletin****Model: 122289-00/99****Advantek III - Ultra****DESCRIPTION**

- Two-stage
- 230 volts rating (240VAC performance below)
- 5.7"/145 mm diameter
- Double ball bearings
- Single speed
- Thru-flow discharge
- Thermoset fan end bracket
- Stamped steel top end bracket

DESIGN APPLICATION

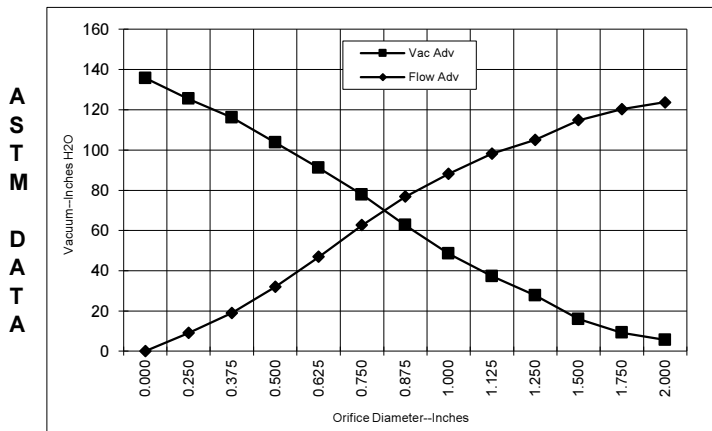
- Equipment operating in environments not requiring separation of working air from motor ventilating air
- Designed to handle clean, dry, filtered air only

**SPECIAL FEATURES**

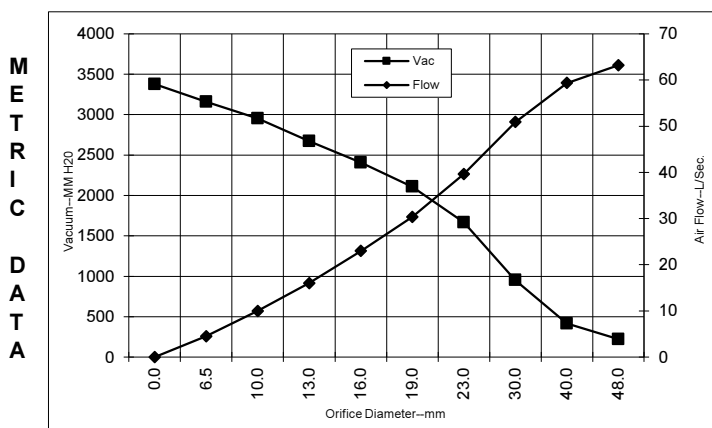
- Suitable for 230 volt AC operation, 60 Hz
- UL recognized, category PRGY2 (E47185)
- Provision for grounding
- Skeleton-frame construction
- Thermostat equipped
- High efficiency fan system
- The Lamb Electric vacuum motor line offers a wide range of performance levels to meet design needs

TYPICAL MOTOR PERFORMANCE.*

(At 240 volts, 60Hz, test data is corrected to standard conditions of 29.92 Hg, 68° F.)



Orifice (Inches)	Amps	Watts (In)	RPM	Vac (In.H2O)	Flow (CFM)	Air Watts
2.000	7.3	1640	24126	6.9	136.0	110
1.750	7.3	1650	24125	11.0	131.1	170
1.500	7.3	1645	24124	18.6	123.5	269
1.250	7.3	1639	24224	31.8	112.1	419
1.125	7.2	1629	24224	42.1	104.3	515
1.000	7.2	1611	24464	54.7	93.6	600
0.875	6.9	1571	24660	69.3	80.7	656
0.750	6.6	1494	25303	82.8	64.6	627
0.625	6.1	1388	26233	95.3	48.0	536
0.500	5.6	1262	27367	106.4	32.4	404
0.375	4.9	1117	28798	118.0	19.1	265
0.250	4.5	1024	30029	124.7	9.0	132
0.000	4.0	928	31405	132.9	0.0	0



Orifice (mm)	Amps	Watts (In)	RPM	Vac (mm H2O)	Flow (L/Sec)	Air Watts
48.0	7.3	1644	24125	221	63.2	136
40.0	7.3	1647	24124	414	59.3	239
30.0	7.3	1633	24224	952	50.9	472
23.0	7.0	1581	24611	1667	39.6	642
19.0	6.6	1492	25321	2109	30.3	626
16.0	6.2	1393	26196	2407	23.0	540
13.0	5.6	1275	27253	2674	16.0	417
10.0	5.0	1139	28583	2954	10.0	286
6.5	4.5	1028	29967	3158	4.5	139
0.0	4.0	928	31405	3377	0.0	0

Note: Metric Performance data is calculated from the ASTM data above.

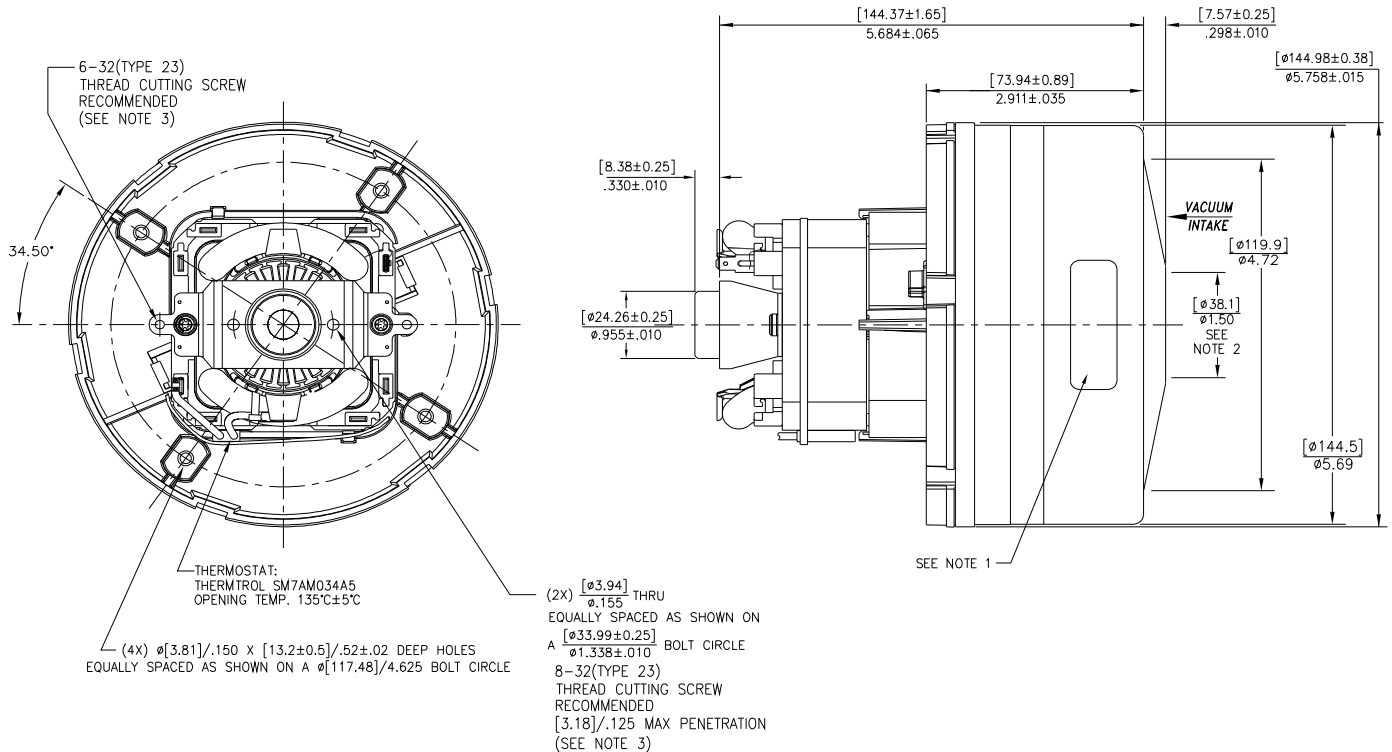
* Data represents performance of a typical motor sampled from a large production quantity. Individual motor data may vary due to normal manufacturing variations.

Test Specs:	230V	Minimum Sealed Vacuum: 120"	ORIFICE:	7/8 "	Minimum Vacuum: 63"	Maximum Watts:	1550
-------------	------	-----------------------------	----------	-------	---------------------	----------------	------

DIMENSIONS

NOTES:

1. MODEL NUMBER, DATE OF MANUFACTURE, PLANT LOCATION CODE, AGENCY RECOGNITION CODE, INSPECTOR'S CODE, MANUFACTURER'S NAME, "US PATENT: US 6,703,754 B1", VOLTAGE AND FREQUENCY, AND CUSTOMER'S PART NO. TO APPEAR ON MOTOR.
2. MOUNTING MUST NOT RESTRICT THIS DIAMETER.
3. GROUNDING OR EARTHING PROVISIONS: USE HOLES AS INDICATED FOR GROUNDING OR EARTHING. REFER TO APPROPRIATE LISTING OR REGULATORY AGENCY FOR PROPER METHOD OF GROUNDING OR EARTHING.



IMPORTANT NOTE: Pictorial and dimensional data are subject to change without notice. Contact factory for current revision levels.

WARNING - When using AMETEK Floorcare & Specialty Motors (F&SM) bypass motors in machines that come in contact with foam, liquid (including water), or other foreign substances, the machine must be designed and constructed to prevent those substances from reaching the fan system, motor housing, and electrical components. F&SM vacuum motors other than hazardous duty models should not be applied in machines that come in contact with dry chemicals or other volatile materials. Failure to observe these precautions could cause flashing (depending on volatility) or electrical shock which could result in property damage and severe bodily injury, including death in extreme cases. All applications incorporating F&SM motors should be submitted to appropriate organizations or agencies for testing specifically related to the safety of your equipment.

AMETEK Dynamic Fluid Solutions
www.ametekdfs.com